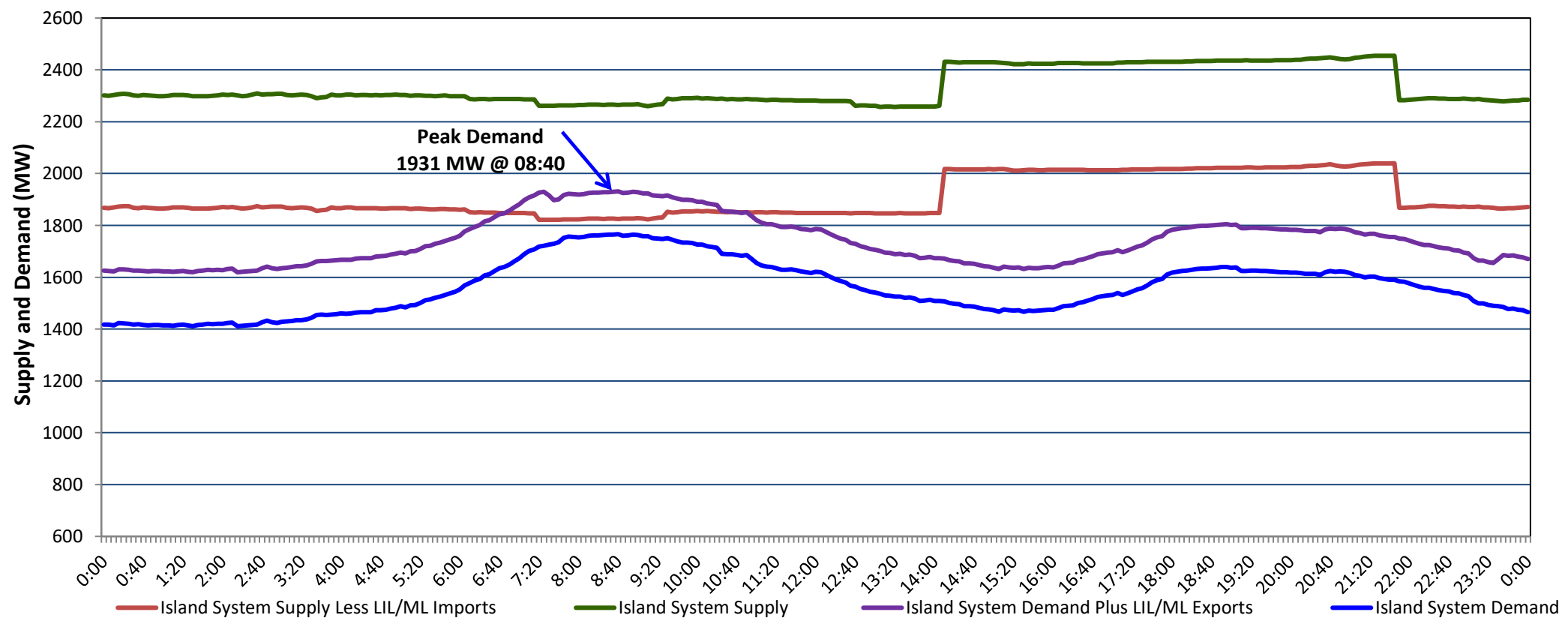


Newfoundland Labrador Hydro (NLH) Supply and Demand Status Report Filed Monday, February 27, 2023

Section 1 Island Interconnected System Supply, Demand & Exports Actual 24 Hour System Performance For Friday, February 24, 2023



Supply Notes For February 24, 2023

1,2

- A At 0718 hours, February 24, 2023, Hardwoods Gas Turbine available at 25 MW (50 MW).
- B At 0930 hours, February 24, 2023, Hardwoods Gas Turbine available at full capacity (50 MW).
- C At 1406 hours, February 24, 2023, Holyrood Unit 1 available (170 MW).
- D At 2148 hours, February 24, 2023, Holyrood Unit 1 unavailable due to planned outage (170 MW).

Section 2 Island Interconnected Supply and Demand

Sat, Feb 25, 2023	Island System Outlook ³		Seven-Day Forecast		Temperature (°C)		Island System Daily Peak Demand (MW)	
					Morning	Evening	Forecast	Adjusted ⁷
Available Island System Supply: ⁵	2,281	MW	Saturday, February 25, 2023		-13	-13	1,810	1,708
NLH Island Generation: ^{4,8}	1,525	MW	Sunday, February 26, 2023		-15	-14	1,700	1,598
NLH Island Power Purchases: ⁶	115	MW	Monday, February 27, 2023		-14	-12	1,765	1,663
Other Island Generation:	225	MW	Tuesday, February 28, 2023		-14	-13	1,640	1,540
ML/LIL Imports:	416	MW	Wednesday, March 1, 2023		-11	-6	1,580	1,480
Current St. John's Temperature & Windchill:	-14 °C	-25 °C	Thursday, March 2, 2023		-5	-7	1,565	1,485
7-Day Island Peak Demand Forecast:	1,810	MW	Friday, March 3, 2023		-4	-6	1,475	1,395

Supply Notes For February 25, 2023

3

- Notes:
1. Generation outages for running and corrective maintenance are included. These are not unusual for power system operations. They generally do not impact customer supply. The power system operators schedule outages to system equipment whenever possible to coincide with periods when customer demands are low and sufficient supply reserves are available. However, from time to time equipment outages are necessary and reserves may be impacted.
 2. Due to the Island system having no synchronous connections to the larger North American grid, when there is a sudden loss of large generating units there may be a requirement for some customer's load to be interrupted for short periods to bring generation output equal to customer demand. This automatic action of power system protection, referred to as under frequency load shedding (UFLS), is necessary to ensure the integrity and reliability of system equipment. Under frequency events have typically occurred 5 to 8 times per year on the Island Interconnected System and the resultant customer load interruptions are generally less than 30 minutes. With the activation of the Maritime Link frequency controller during the winter of 2018, UFLS events have occurred less frequently.
 3. As of 0800 Hours.
 4. Gross output including station service at Holyrood (24.5 MW) and improved NLH hydraulic output due to water levels (35 MW).
 5. Gross output from all Island sources (including Note 4).
 6. NLH Island Power Purchases include: CBPP Co-Gen, Nalcor Exploits, Rattle Brook, Star Lake, Wind Generation and capacity assistance (when applicable).
 7. Adjusted for curtailable load, market activities and the impact of voltage reduction when applicable.
 8. Due to limitations inherent in the design of combustion turbines, the output of combustion turbines may be reduced in the event that ambient temperatures exceed the threshold

Section 3 Island Peak Demand Information Previous Day Actual Peak and Current Day Forecast Peak

Fri, Feb 24, 2023	Actual Island Peak Demand ⁹	8:40	1,931 MW
Sat, Feb 25, 2023	Forecast Island Peak Demand		1,810 MW

Notes: 9. Island Demand / LIL / ML Exports (where applicable) is supplied by NLH generation and purchases, plus generation owned and operated by Newfoundland Power and Corner Brook Pulp & Paper (Deer Lake Power, DLP).